



Light

Fast

Portable

Simple

SKIRON

TECHNICAL SPECIFICATIONS:

Speed: up to 45 000 points / second

Accuracy: 50 μm / 0.002 "

Laser line length: 75 mm / 2.95 "

Measuring field: 65 mm / 2.56 "

Stand-off distance: 50 mm / 2 "

Line resolution: 83 μm / 0.0033 "

Vertical resolution (sub-pixel): 16 μm / 0.0006 "

Laser class: II

Dimensions: 112 x 61 x 76 mm / 4.4 x 2.4 x 3 "

Weight: 260 g

Kreon

Resulting from Kreon knowhow in 3D laser scanners, the new Kreon Skiron is a very compact, light and ergonomic laser scanner. Fully integrated on the well-known MicroScribe® desktop digitizers (G2 and MX series), this new laser scanner dramatically reduces digitizing time.

Its capability to accurately scan details with a high speed opens a wide range of applications.

Delivered with the user-friendly and ergonomic software "Scantools 3D", this solution can easily combine traditional metrology and non-contact measurement in a perfect fit.

APPLICATIONS

Combined with the MicroScribe® desktop digitizer, Skiron laser scanner is suitable for all 3D application needs including industrial, medical, architecture, archaeology, film industry... It is flexible enough to cover many different applications ; such as:

- Industrial design
- Reverse engineering
- Inspection and quality control
- 3D animation
- Research
- Product development
- Rapid prototyping

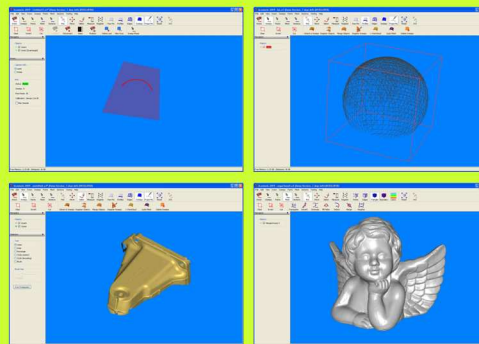


USER BENEFITS

- Easy setup and use
- Cost-effective
- Fast and accurate
- Powerful and user-friendly software
- Portable
- Manual and automatic setup for all materials and textures
- Open technology

SOFTWARE

Scantools 3D software gives access to the functionalities of the Skiron scanner. This easy to use software allows data collection in a very short time as well as processing them :



- Real time preview while scanning
- Data alignment
- Point cloud processing
- Mesh generation
- Mesh editing, cleaning and trimming
- Export to major formats: stl, dxf, 3dm, obj...

An API of Skiron is also available for application software integration.

Scantools 3D software is compatible with Windows XP, Vista and Windows 7 ; 32 and 64 bits on laptop or desktop computers.

Minimum configuration:

- Processor 2,4 Ghz
- 1 Go RAM
- 512 Mo video memory
- IEEE1394/firewire 400 port

Kreon GmbH
Lutherstrasse 68
63225 Langen
Deutschland
Tel: +49 6103 921 668
Fax: +49 6103 202577
www.kreon3d.de



The complete 3D scanning solutions

Kreon Technologies
Ester Technopole
porte 13 - 1, av. d'Esther
87069 Limoges Cedex
France
Tel: +33 (0)5 55 42 80 40
Fax: +33 (0)5 55 42 80 08
www.kreon3d.com